


Lable Printer

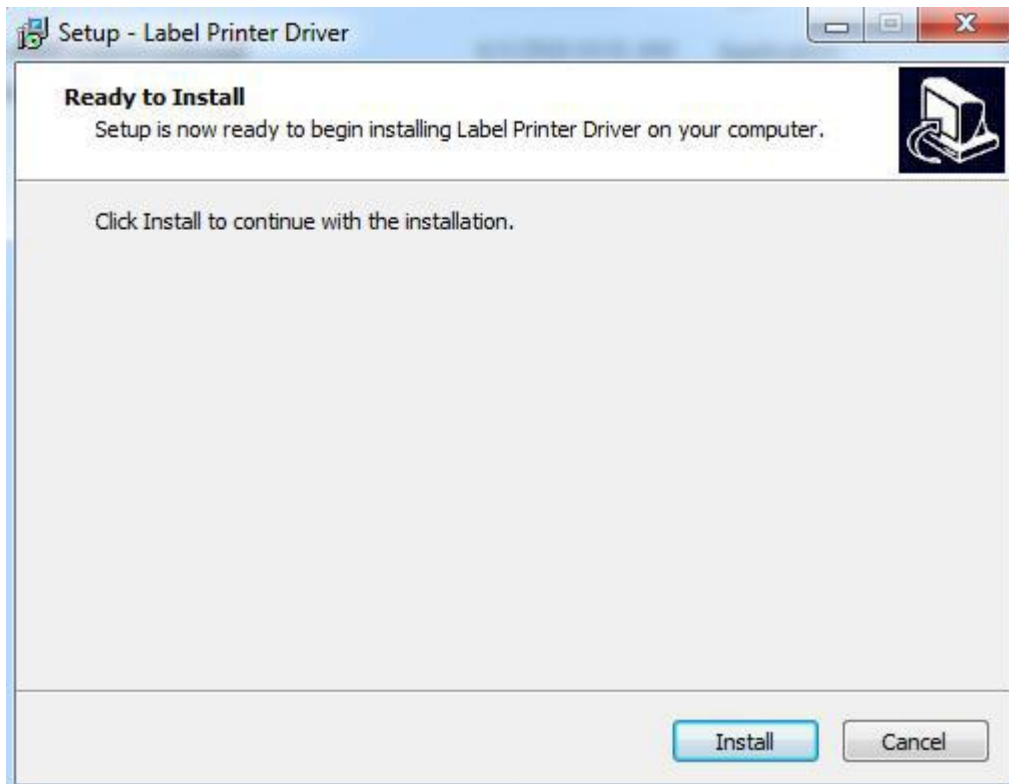
Driver Setup Manual

1. Windows Driver Installation

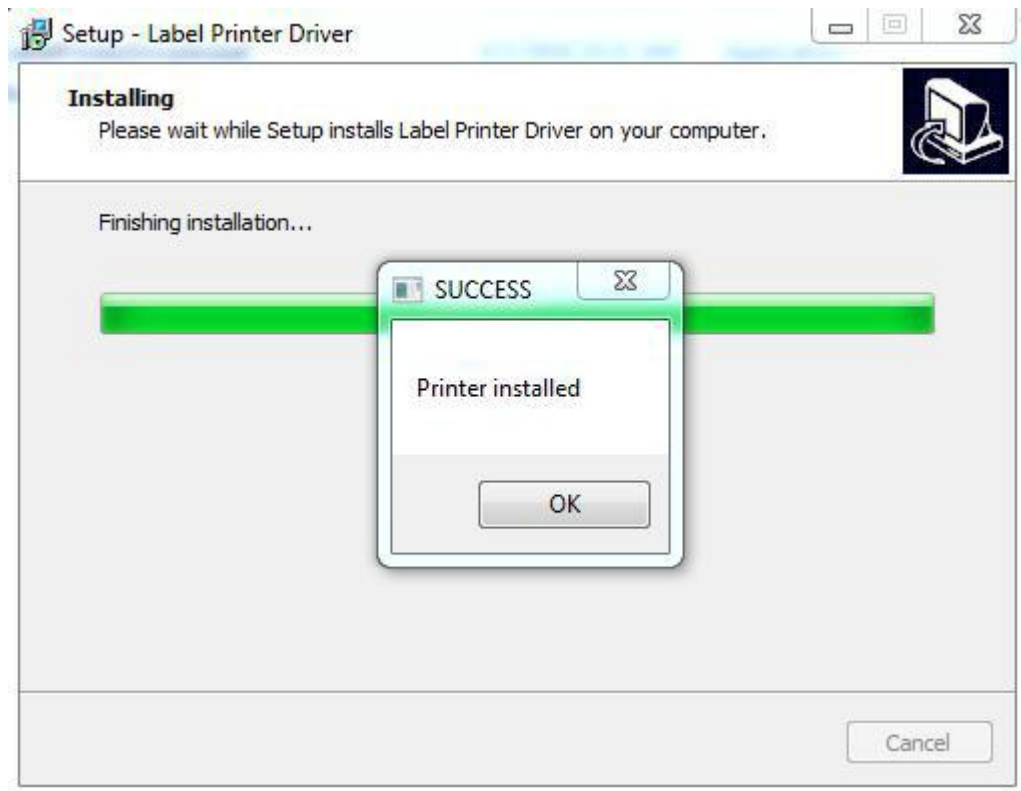
Double click the installation  LabelPrinterDriverInstall , Then, it will show as below picture:



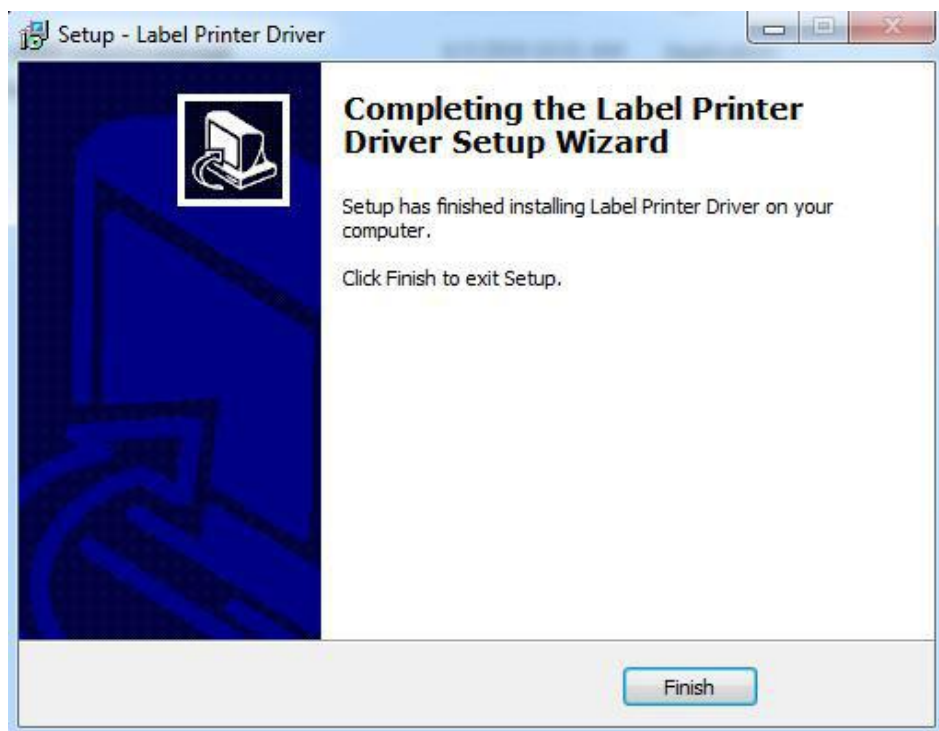
Select the language, then click "OK" .Then, it will show as below picture:



Then click "Install". It will show as below picture:



Wait till it shows the above picture, it means, the printer driver has been installed successfully, and then click "OK".



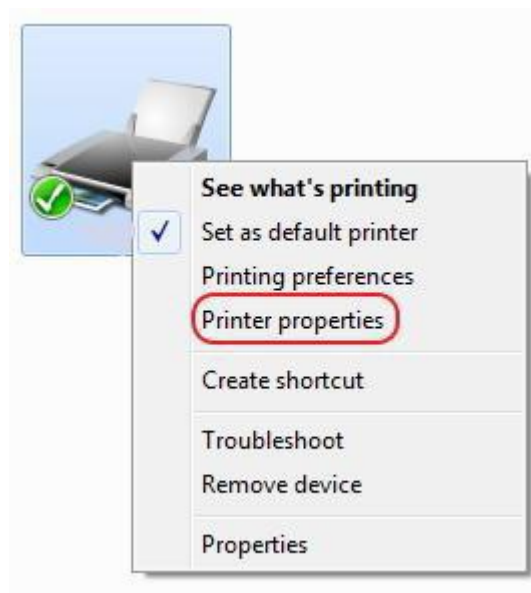
Click "Finish" to finish driver installation.

2. Printer Setup and Testing

2.1 Setup Printer Properties

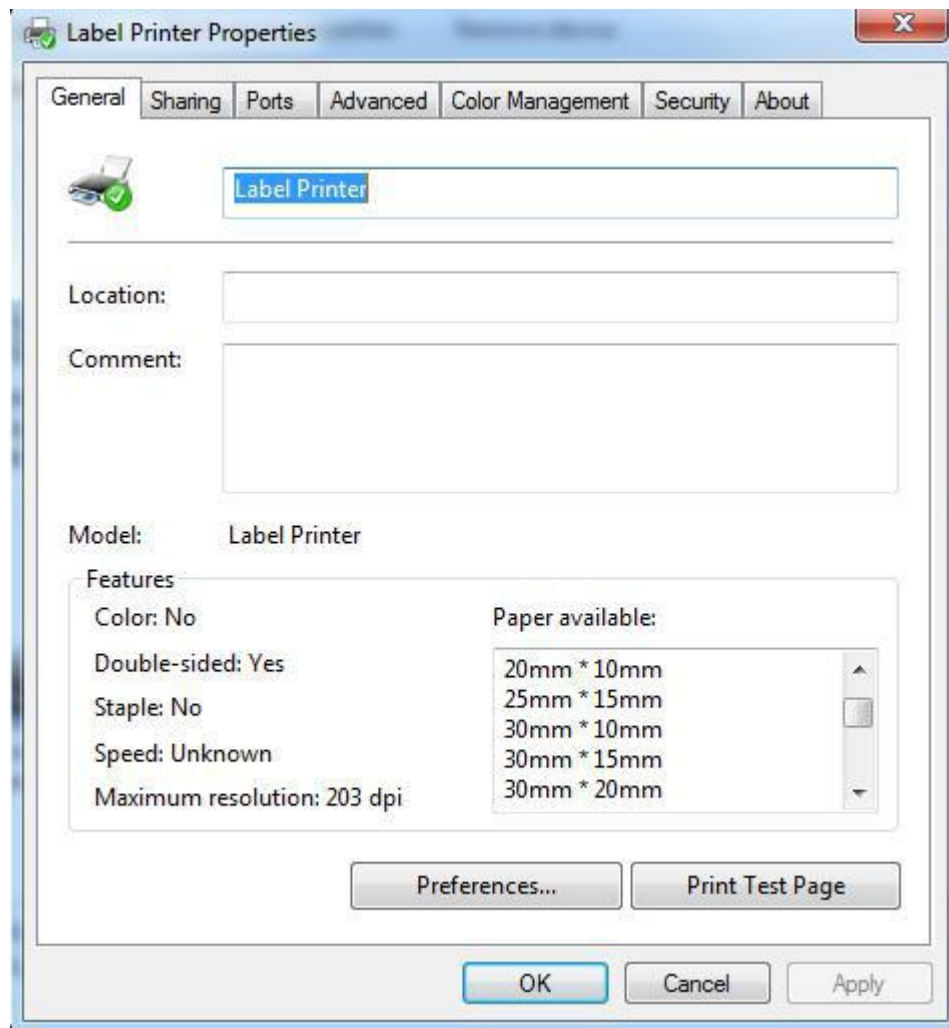


Click Start Menu, and then click " Devices and Printers", just as above picture



Right-Click "Label Printer" and then click "Printer properties"

And then, it will show as below picture:

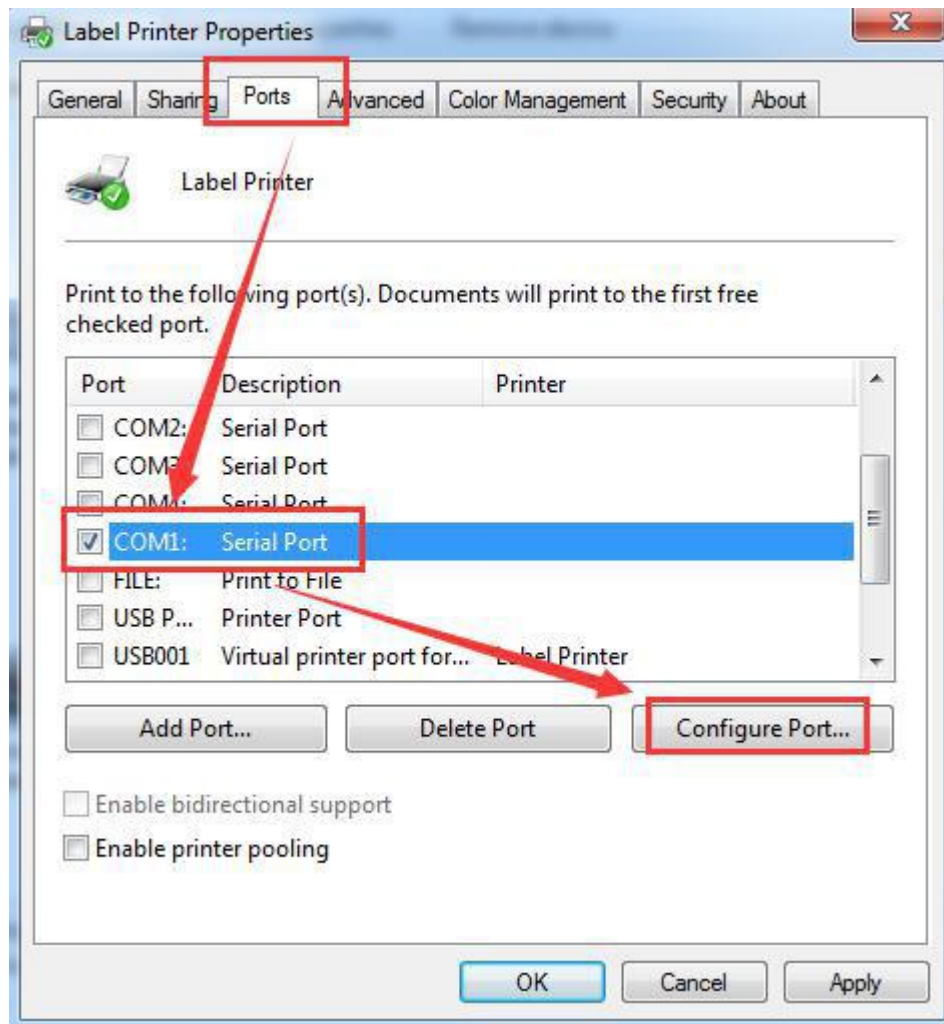


On Label Printer “General”, you could configure the printer communication port, such as Serial port, Parallel port and USB port. You also could set the paper specification, beeper etc.

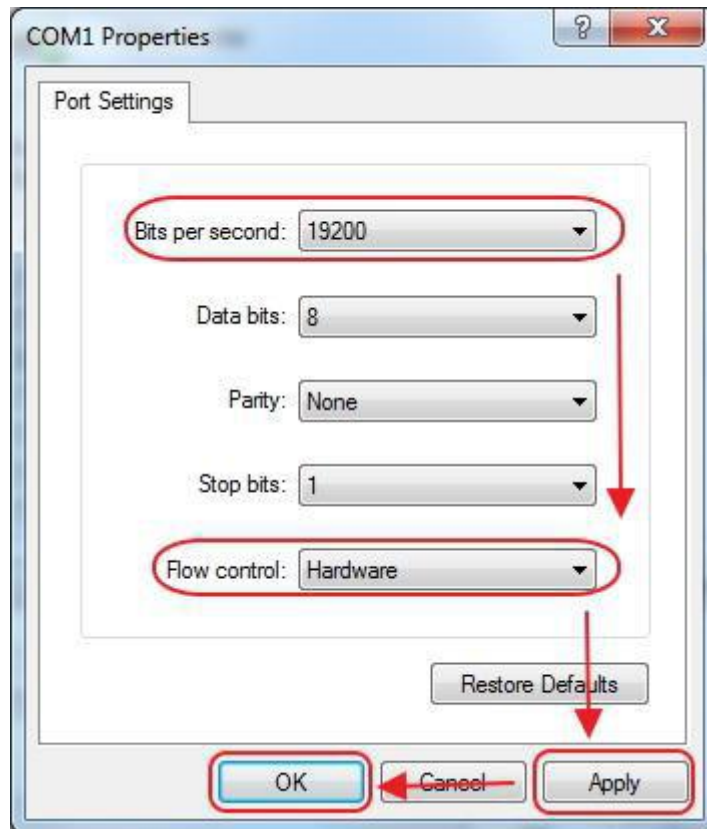
After all the setting, you could start to print the testing page.

2.2 Serial Port Configuration

On Label Printer "Ports", you could configure the Serial Port to Communicate printer to computer, see the below picture:



Select available computer COM port, such as "COM1" as the above picture, and then click "Configure Port" to set the detailed parameter.

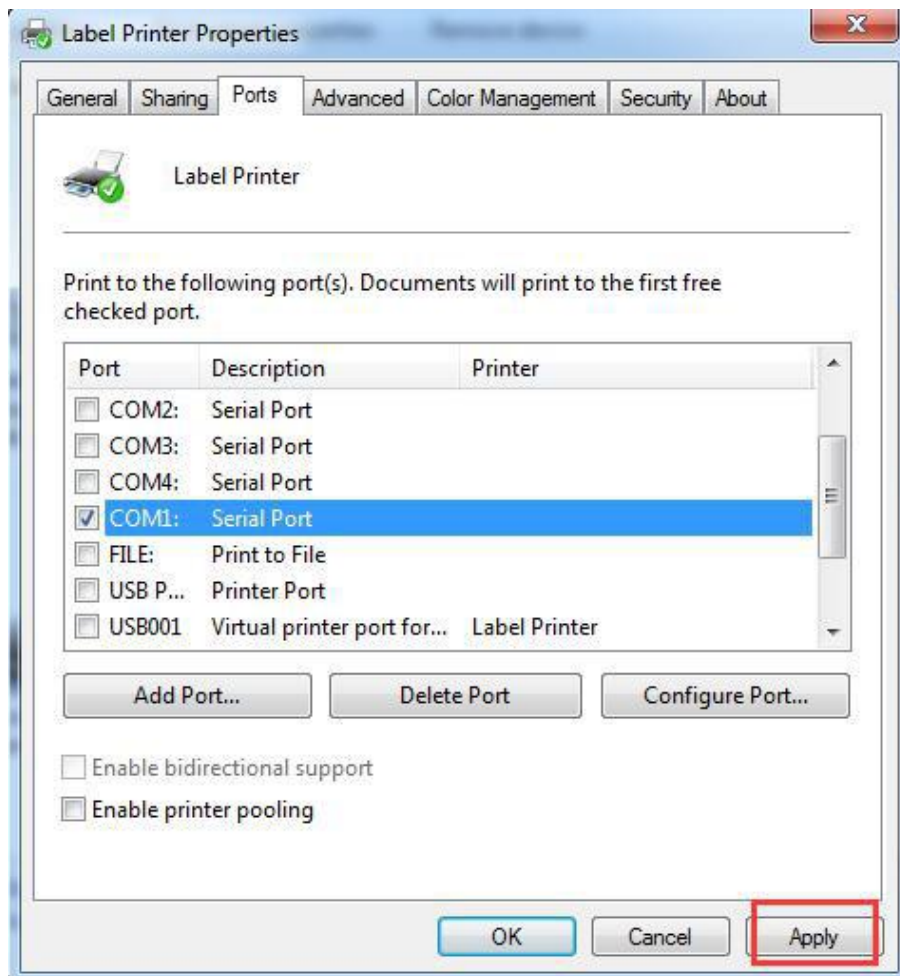


"Bit per second" means Serial port baud rate, it must same as printer setting. For example, if printer baud rate is "19200bsp", then you must select "19200" on "Bit per second", just as above picture. (Factory default baud rate is 19200bps)

"Flow control", we recommend select "Hardware"

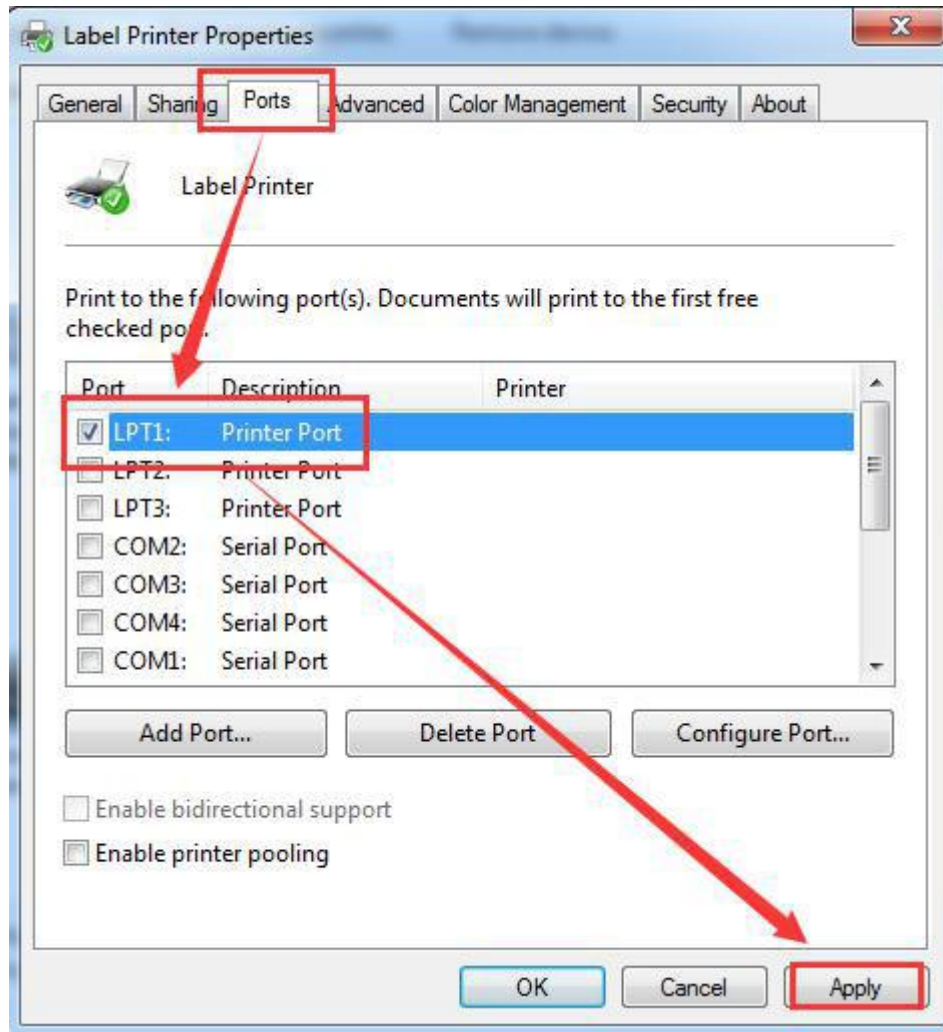
After setting, click "Apply", and then click "OK".

When it shows as below picture, click "Apply" to finish Serial Port Configuration.



2.3 Parallel Port Configuration

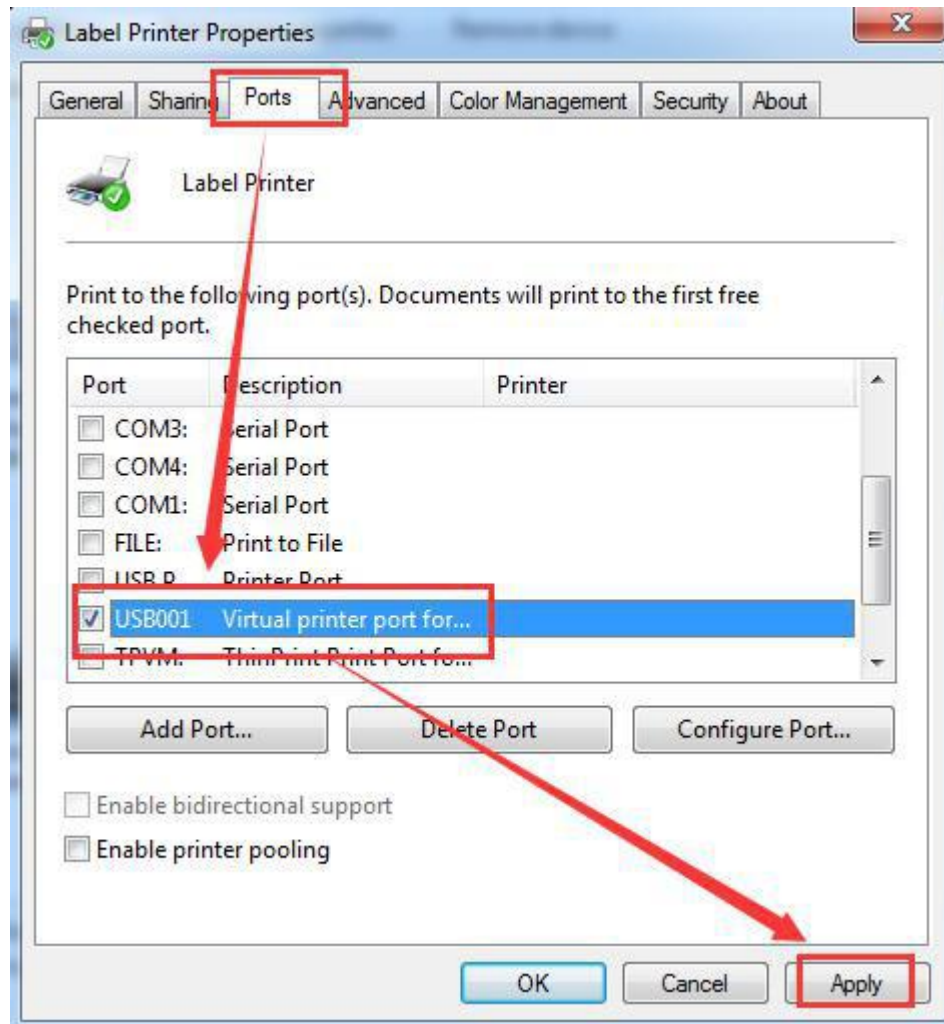
On Label Printer “Ports”, you could configure the Parallel Port to communicate printer to computer, see the below picture:



Select available computer LPT port, such as the above picture shows “LPT1”, then click “Apply” to finish the configuration.

2.4 USB Port Configuration

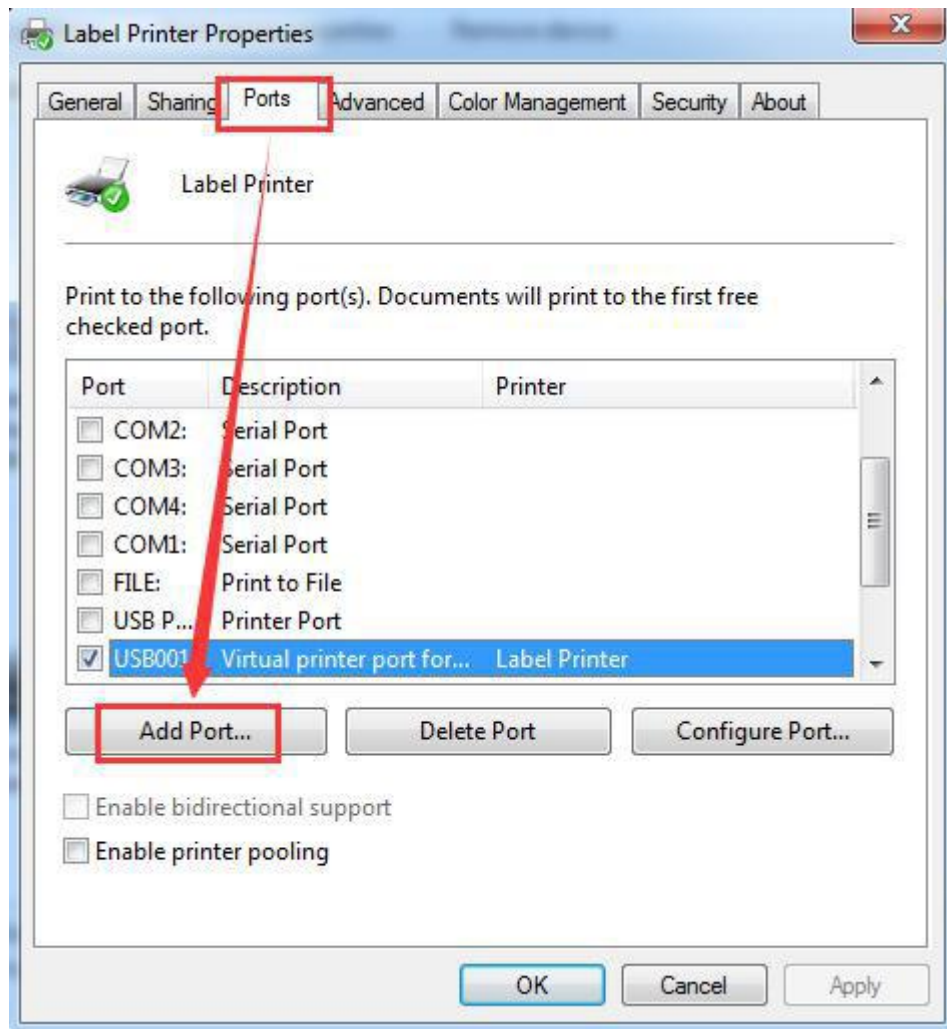
On Label Printer “Ports”, you could configure the USB Port to communicate printer to computer, see the below picture:



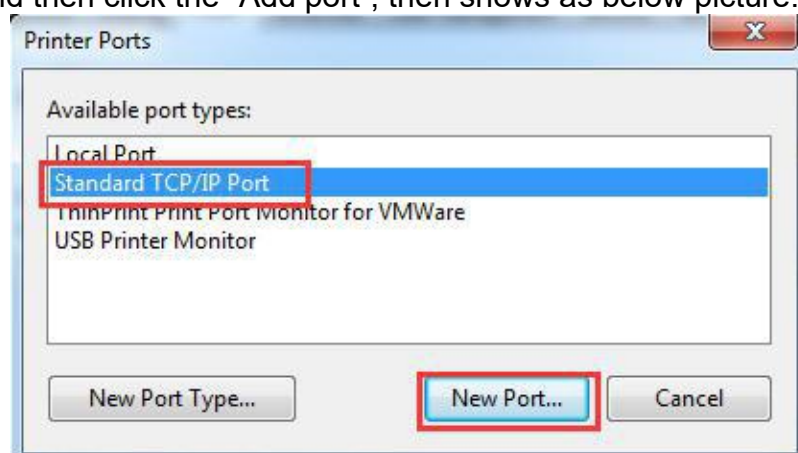
Select available computer USB communication port, such as the above picture shows “USB001”, and then click “Apply” to finish the configuration.

2.5 Ethernet Port Configuration

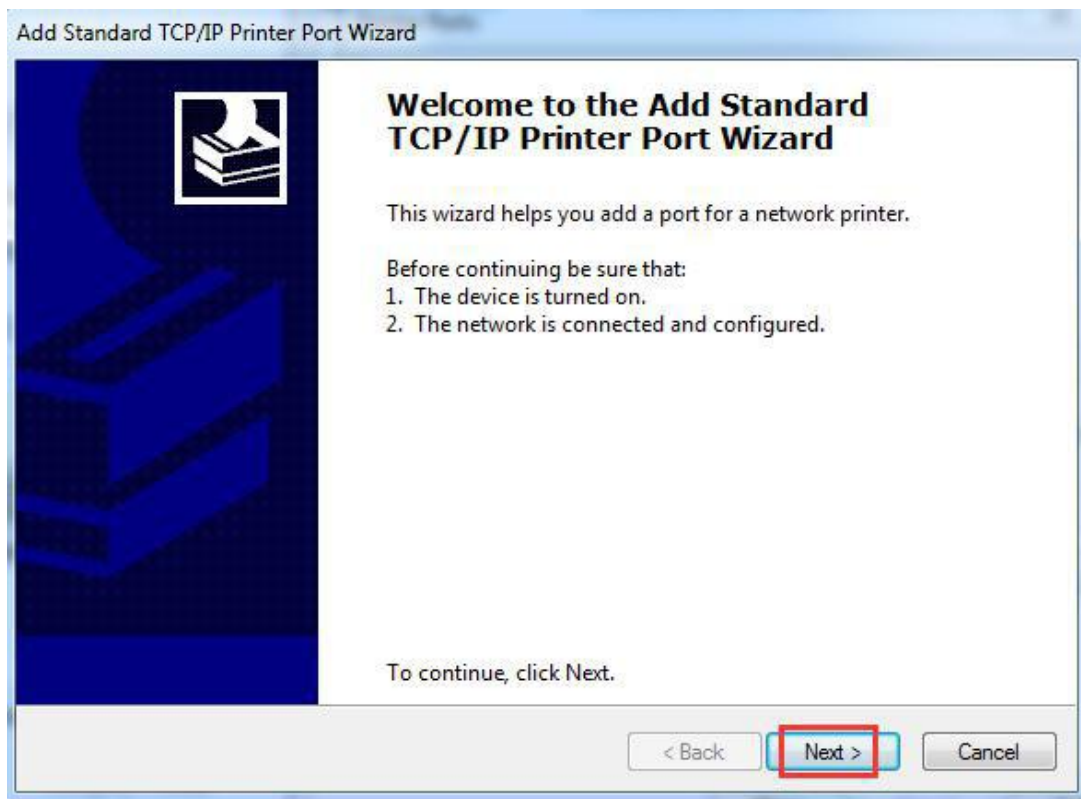
On Label Printer “Ports”, you could configure the Ethernet Port to Communicate printer to computer, see the below picture:



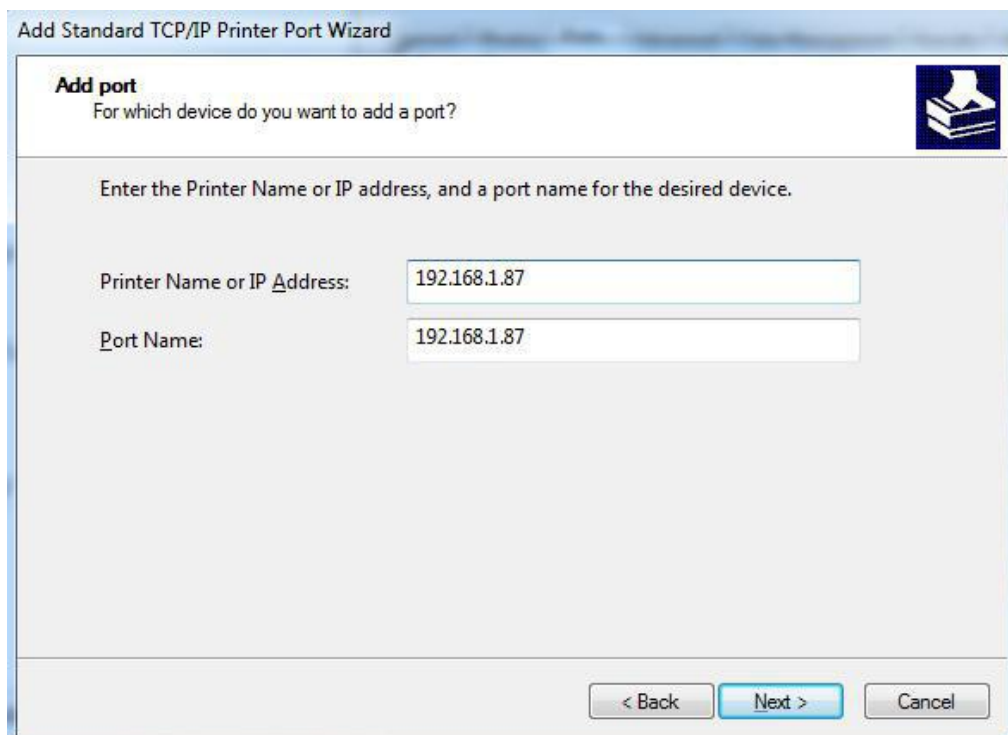
Click “port” and then click the “Add port”, then shows as below picture:



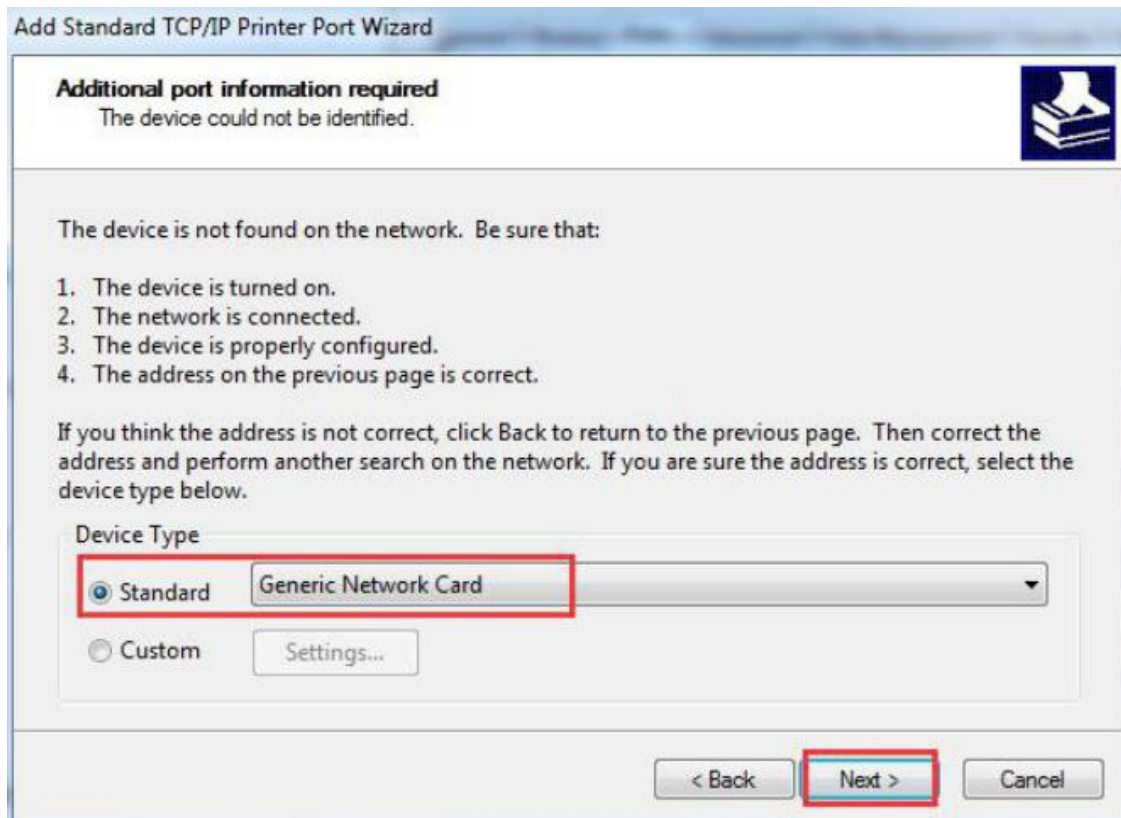
Select "Standard TCP/IP Port", and click "New Port...", then shows as below picture:



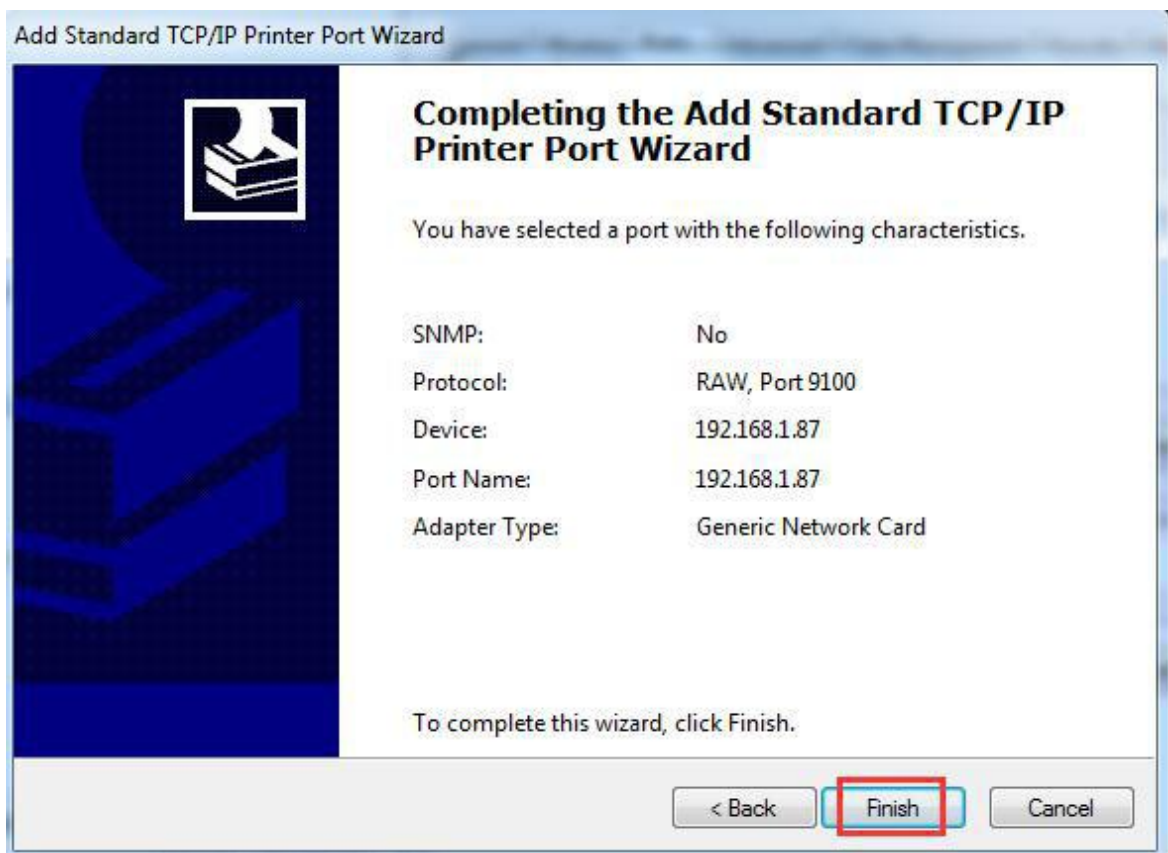
Then click "Next".



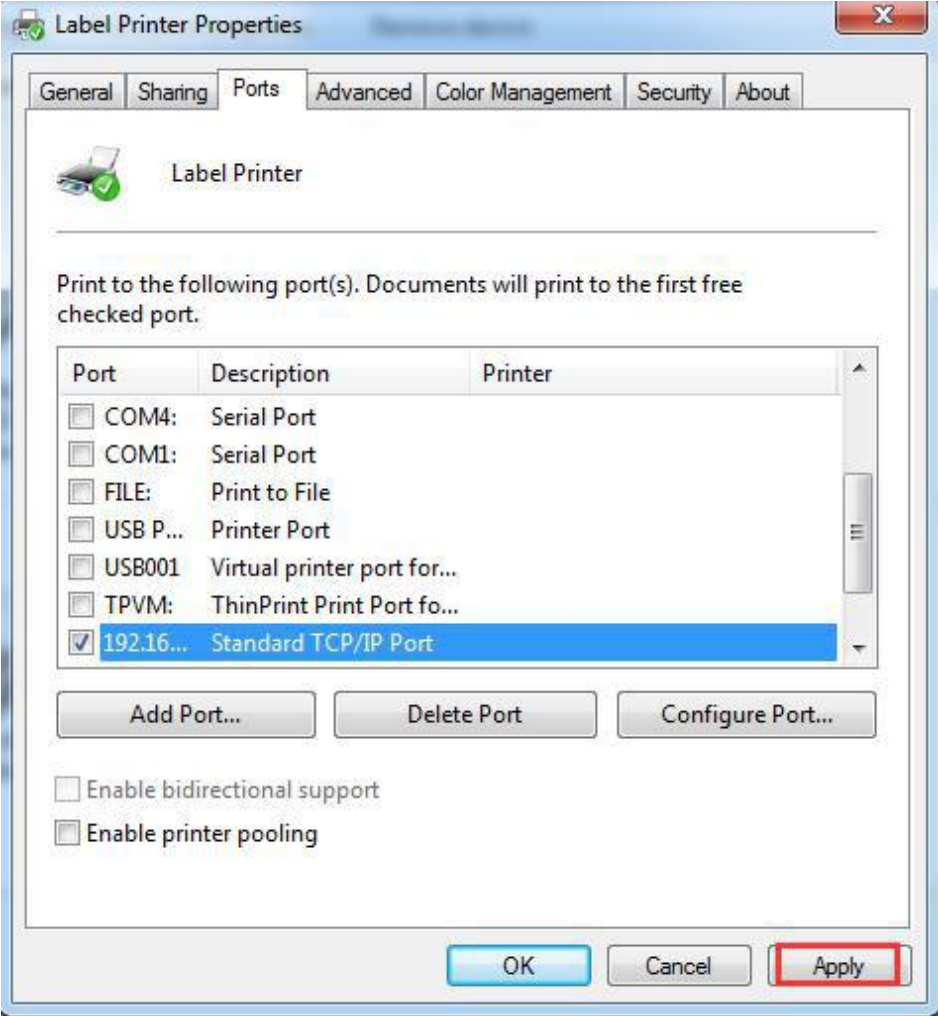
Enter the IP address of the printer Ethernet port, Factory default IP is "192.168.1.87".



When it shows as below picture, select “Standard” and then click”Next”.

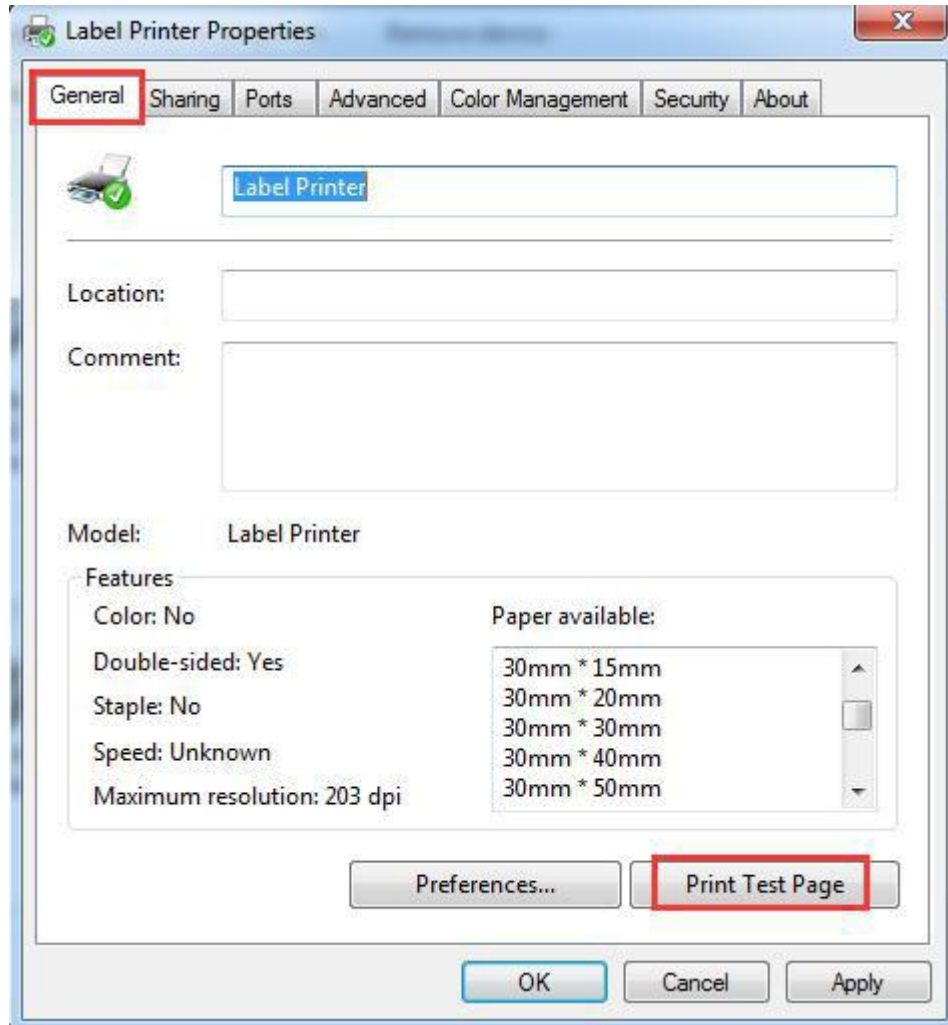


Select "Standard TCP/IP Port", and then click "Apply" to finish the configuration.



2.6 Printing Test Page

After finishing port configuration, we start to print test page. On Label Printer “General”:

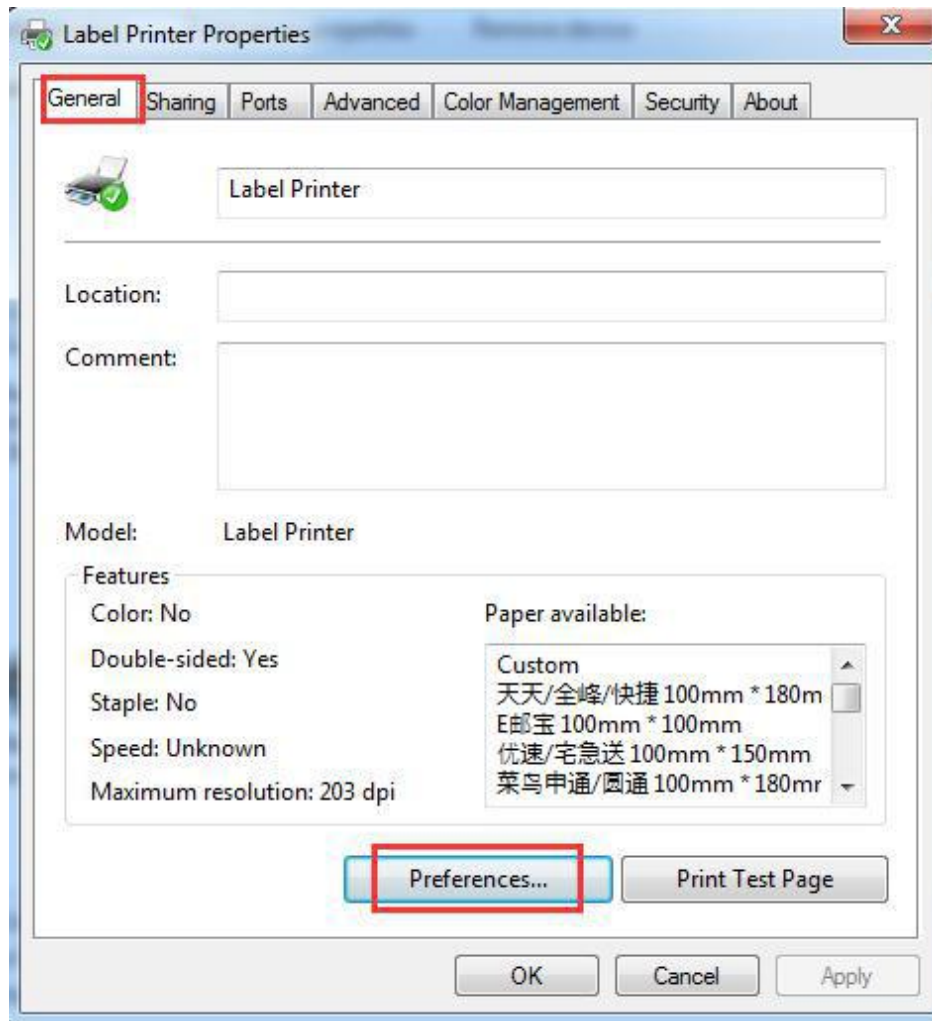


Click “Print Test Page”, the printer will print test page, which means the printer has been connected with computer successfully and the port configuration is correct.

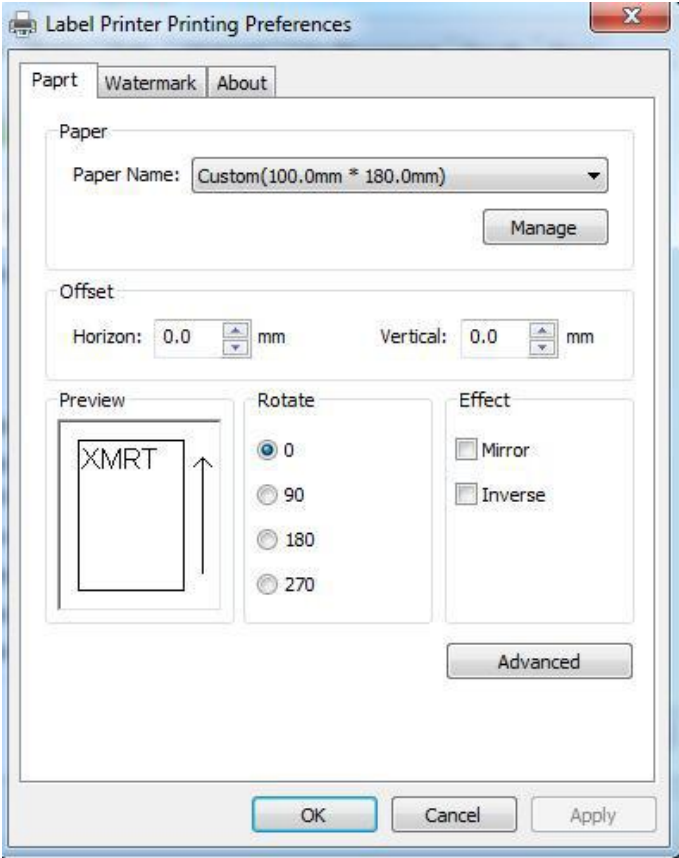
5.7 Other Properties and Function Configuration

You could set the paper specification etc., please refer to the follows:

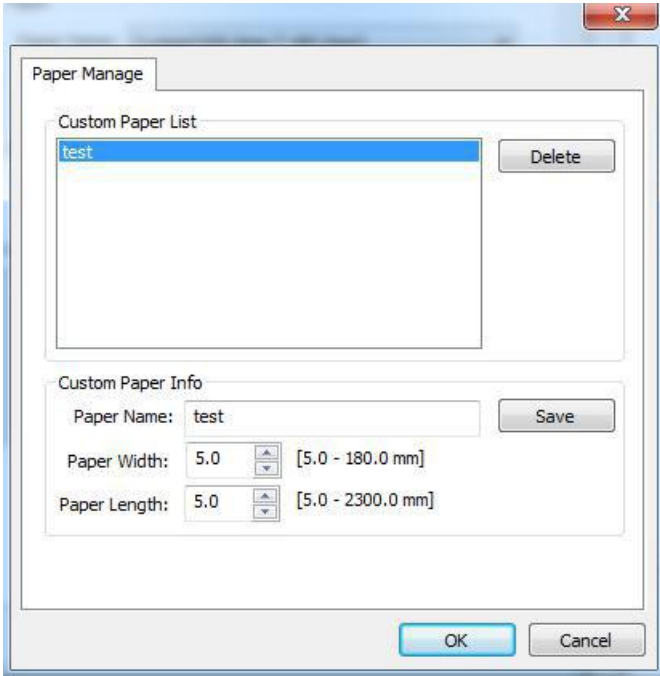
Select the printer properties, click on "Print preferred page", enter the page and print settings interface, as shown in the following figure.



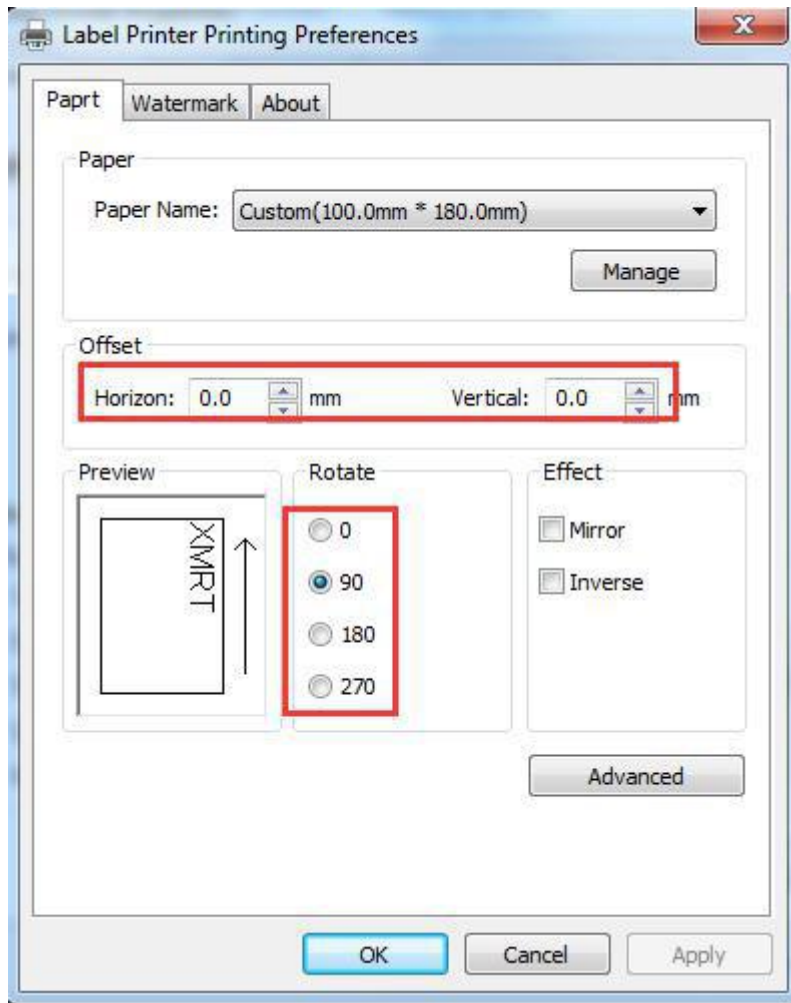
Click the Paper Name drop-down box to select the paper size to use.



Click "Manage" to enter the custom paper interface.



Offset sets horizontal and vertical margins. Rotate to print in different directions.



Click Advanced Settings to enter the Set Print Density and Set Print Speed screen as shown in the following figure.

