

# EDIKIO PRICE TAG FLEX

## THE FLEXIBLE SOLUTION TO PRINT PRICE TAGS ON STANDARD AND LONG PLASTIC CARDS

Edikio Price Tag Flex is an all-in-one solution for single-sided printing on standard and long price tags.

Made for retailers who need to print on several tag formats, Edikio Price Tag Flex includes everything needed to update and print price tags in a few minutes:



## EASY-TO-USE SOFTWARE

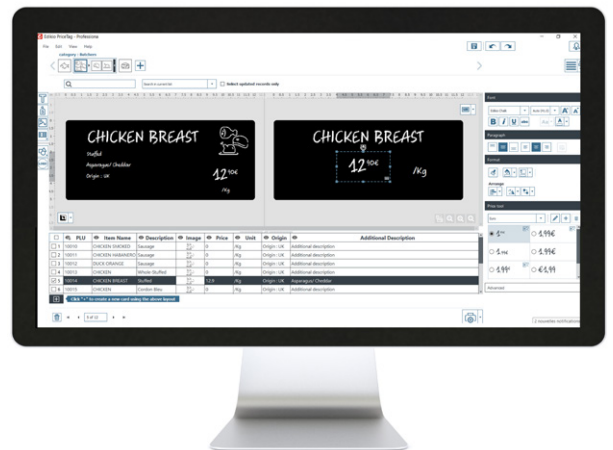
Thanks to the Edikio Price Tag Flex solution, you benefit from the customized functionality of the Edikio Price Tag "Standard edition".

Create price tags in a **user friendly interface** with:

- An All-in-one view to have access at a glance your card design and your list of items
- A wide range of images, pre-designed templates and sample database lists dedicated to your needs
- The exclusive Edikio Chalk font
- Tag holder footprint to visualize the mark of your tag holder on your card design
- A graphical wizard to import data from Excel files and for dual sided printing
- A Lock function to prevent unwanted changes

It also contains **simple and useful features** like:

- Automatic detection of the updated prices since the last print
- Automatic refresh from an external database
- An easy tool to select price formats and currencies
- Backup & Restore function to save easily all your data
- Search toolbar with highlighted results
- Long card management (120 and 150 mm)



**Ideal for medium or larger retailers, such as:**

Supermarkets, Bakers, Butchers, Pastry chefs, Chocolate sellers, Cheesemongers, Fishmongers, Caterers, Wine merchants...

# SPECIFICATIONS

Product reference no.	EF1H0000XS-BS002
Printer	Edikio Flex Single-sided, edge-to-edge printing in color and monochrome (Margin: 0.4mm in color / 0.7 mm for monochrome white printing)
Consumables included	- 1 white print ribbon (for approx. 1000 prints in credit-card format / 640 prints in long format 150 x 50 mm) - 100 black cards, credit-card format (85.60 x 53.98 mm), thickness 0.76 mm - 100 black cards, long format (150 x 50 mm), thickness 0.50 mm
Software included	Edikio Price Tag software - STANDARD edition including Edikio Printer Suite – Driver for Windows®
Compatible cards	PVC cards Credit-card format ISO CR80 - ISO 7810: 85.60 x 53.98 mm Long formats: 120 x 50 mm and 150 x 50 mm
Card thickness	0,5 mm - 0.76 mm (20 mil - 30 mil)
Print ribbon management	Automatic ribbon identification and installation Visual notification when running low/end of ribbon (as of Windows® 7)
Printing technology	Color dye sublimation (16 million colors), monochrome thermal transfer, print head 300 dpi, print resolution up to 600 dpi
Print speeds	Monochrome, credit card: 390 cards/hour (9.2 sec/label) Monochrome, 150 x 50 mm: 260 cards/hour (13.8 sec/label) YMCKO color, credit card: 135 cards/hour (26.5 sec/label)
Capacity of card container/loader	Up to 50 cards/Up to 25 cards (thickness 0.76 mm)
Dimensions (H x W x D)/Printer Weight	247 mm x 205 mm x 426 mm/3.8 kg
Min/max operating temperature:	15°C / 30°C (59°F / 86°F)
Connectivity	USB (1.0, 1.1, 2.0, 3.0) Ethernet
Ship kit contents	1x Edikio Flex printer 1x Edikio Price Tag software suite – USB key 100 black cards, credit-card format (85.60 x 53.98 mm), thickness 0.76 mm 100 black cards, long format (150 x 50 mm), thickness 0.5 mm 1x monochrome white ribbon 1x start-up cleaning kit 1x USB cable (1.80 m), power pack and power supply cable
Warranty	2 years, optional warranty extension to 4 years available
Minimum system requirements	Windows® 7 or higher (32 or 64 bits) 2 GB of RAM 2.5 GB hard disk free space 1024 x 768 pixel monitor resolution 1 USB port

[www.edikio.com](http://www.edikio.com)

## HQ | EUROPE – MIDDLE EAST – AFRICA

Evolis – 14 avenue de la Fontaine – ZI Angers-Beaucouzé – 49070 Beaucouzé – France  
T +33 (0) 241 367 606 – F +33 (0) 241 367 612 – [info@evolis.com](mailto:info@evolis.com)

**US & CANADA** - Boston - [evolisnortham@evolis.com](mailto:evolisnortham@evolis.com)

**LATIN AMERICA** - Miami - [evolislata@evolis.com](mailto:evolislata@evolis.com)

**ASIA-PACIFIC** - Singapore - [evolisasia@evolis.com](mailto:evolisasia@evolis.com)

**CHINA** - Shanghai - [evolischina@evolis.com](mailto:evolischina@evolis.com)

**INDIA** - Mumbai - [evolisindia@evolis.com](mailto:evolisindia@evolis.com)