

NQire 1000
Manta II
micro kiosk

FEATURES

A commercial grade, multi-functional micro kiosk. Get in touch with your target audience through self-service or use the NQire 1000 Manta II as a low-cost entry-level Android POS system for everyday use.

Fully functioning CMS system.

With Octa-Core Cortex-A53 CPU up to 1.5GHz.

Easy to install and use anywhere.

Ideally suited for shelf mounting or oncounter usage in department stores, supermarkets, small grocery stores, drugs- / cosmetic stores, tobacco kiosks and more.

Snappy reading performance.

Armed with Newland's EM2037-V4 2D megapixel barcode scanner. The engine has a 20 degree scan angle for comfortable scanning from bigger products.

Easily build applications.

The NQire 1000 Manta II is built on Android 7.1, allowing for easy development of custom applications, tailored to your needs.

Highly customizable with a broad range of features.

External SCR, thermal printer, dual band WiFi, Bluetooth embedded, front 5Mp camera, Coms included, POE.

Voice confirmation.

For the price checking applications, NQire 1000 Manta II can support voice confirmation.

Variety of mounting accessories.

Foldable desktop stand, VESA magnetic shelf stand, VESA wall mount.

Buckets: Newland's MDM software.

Buckets allows you to monitor and manage all devices in the field from one central administrated location. This MDM software enables you to distribute your APK's, change OS version or settings and many other functions. Buckets MDM software is pre-installed on the NQire 1000 Manta II and includes up to 7 years license-free use.

Application Scenarios

Self-service • access control • price checking • time attendance • airport check, O2O.

Performance	SOC	RK3368, Cortex-A53 1.5 GHz , PowerVR G6110 GPU
	Operating System	Android 7.1
	Memory	2GB DDR3, 8GB eMMC
Physical	Dimensions	252 × 184 × 33mm
	Material	PC + ABS plastic
	P-o-E (optional)	Power-over-Ethernet IEEE 802.3af
	Weight	615 grams, main body only, without power adapter and metal bracket
	Display	10.1" WXGA, 1280*800 TFT LCD display/ 10 points Capacitive Touch
	VESA mount holes	Metal fitting mounting screw holes: 75*75 mm
	Power Supply	Clock Battery
DC - input		AC 100-240V, 50-60Hz, 2A Max, DC12V±5%
Power consumption		1KHz audio playback etc. about 18W maximum, OFF: 0W
LED Indicator		1x LED / Power Supply ON: red, then turns green once kernel boot up Power Supply OFF: LED off
Environmental	Operating Temperature	0°C to 40°C (32°F to 104°F)
	Storage Temperature	-10°C to 55°C (14°F to 131°F)
	Humidity	20% to 65% (40°C)
	Sealing	IP54 (front panel)
Barcode Scanning	1D Barcodes	Code 128, EAN-13, EAN-8, Code 39, UPC-A, UPC-E, Codabar, Interleaved 2 of 5, ITF-6, ITF-14, ISBN, Code 93, UCC/EAN-128, GS1 Databar, GS1 Composite Code, Matrix 2 of 5, Code 11, Industrial 25, Standard 25, Plessey, MSI-Plessey, etc.
	2D Barcodes	PDF417, QR Code, Data Matrix, Chinese Sensible Code, Aztec Code, Maxicode, MicroPDF417*, etc.
Connectivity	WiFi	IEEE 802.11 b/g/n/ac (2.4G) , IEEE 802.11 a/b/g/n/ac (5G)
	Bluetooth	BT 4.1
	LAN	RJ45 Ethernet, 10/100/1000 BaseT / POE (Power Over Ethernet)
Peripherals	Camera	Front: 5.0 MP camera
	Audio	1x 3.5mm Headset + MIC jack, 2x Integrated speakers 8Ω / 1.3W
	Sensor	G Sensor
	Other H / W	VESA mount: Metal-fitting mounting screw holes
	Functional keys	(Vol+ / Vol-) / (Up / Down) / Exit / Power switch
	Optional Module	NFC / RFID reader / MSR reader / Smart card reader
I/O Ports	USB Port	1x USB 2.0 host, type A port, 1x Micro USB 2.0 port
	SD Card Slot	SD Card (SDHC class 10 compatible) slot with cover
	GPIO Port	1x GPIO port
	Expansion Slot	2x POGO-PIN, USB 2.0 / Supports up to two modules working concurrently
	DC-in	4mm DC-In jack, 12V / 2A

Multimedia	Video	MKV, TS, FLV, AVI, VOB, MPG, DAT, ASF, RM, MOV, 3GP, MP4, WMV
	Audio	MP2, WMA, WAV, AAC, OGG, ASF
	Picture	JPG, BMP, GIF
Regulation Compliance		CE, FCC, RoHS
Default Accessory		Multi -pin, multi-plug AC/DC adapter with power cord
Packaging		1PCS packaging box dimensions: 291*204*84mm
		10PCS packaging box dimensions: 437*306*434mm

*Specifications are subject to change without notice *

Version: Preliminary

*For a complete list of all supported barcode symbologies, please see the user guide.

Expansion slot accessories



NFC Reader



MSR Reader

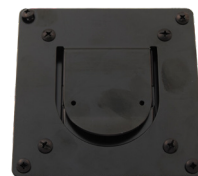
Mounting accessories



Foldable Desktop Stand



VESA Magnetic Shelf Stand



VESA Wall Mount



Newland

SCANNING MADE SIMPLE

Newland EMEA HQ

8 (800) 100 46 22
info@newland-id.com
newland-id.com

D-A-C-H

+49 (6) 182 82916-16
info@newland-id.de

Benelux

8 (800) 100 46 22
benelux@newland-id.com

Italy

+39 (0) 342 0562227
italy@newland-id.com

United Kingdom

+44 (0) 7771 631387
info@newland-id.co.uk

South Africa

Gauteng: +27 (0) 11 553 8010
Cape Town: +27 (0) 21 9140819
info@newland-id.co.za

Turkey

+90 (0) 544 538 40 49
turkey@newland-id.com

France

+39 (0) 345 8804096
france@newland-id.com

Ibérica

+34 (0) 93 303 74 66
info@newland-id.es

Nordic & Baltic

+46 (0) 70 88 47 767
nordic@newland-id.com

Russia

+31 (0) 345 87 00 33
russia@newland-id.com

Middle East

+39 (0) 345 8804096
middleeast@newland-id.com

Iran

+90 (0) 544 538 40 49
iran@newland-id.com